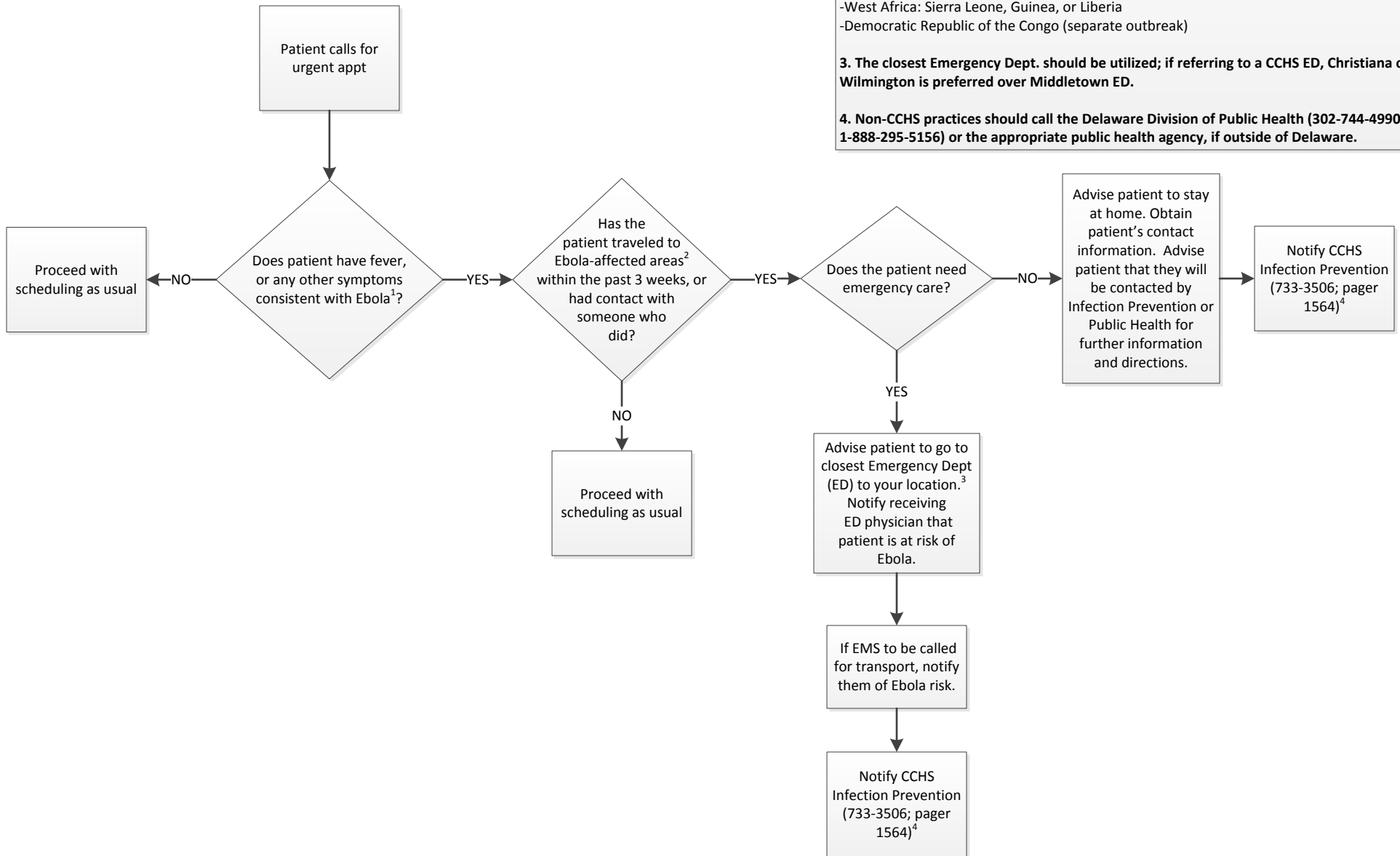


# Christiana Care Health System

## Ebola Screening Procedure for Outpatient Settings: Patients Calling for Urgent Appointment



### 1. Potential Ebola symptoms:

- Fever (greater than 38.0 C or 100.4 F)
- Severe headache
- Body aches/myalgias
- Nausea/vomiting
- Diarrhea
- Abdominal pain
- Unexplained bleeding/bruising

### 2. Ebola-affected countries (as of Oct 23, 2014):

- West Africa: Sierra Leone, Guinea, or Liberia
- Democratic Republic of the Congo (separate outbreak)

### 3. The closest Emergency Dept. should be utilized; if referring to a CCHS ED, Christiana or Wilmington is preferred over Middletown ED.

### 4. Non-CCHS practices should call the Delaware Division of Public Health (302-744-4990 or 1-888-295-5156) or the appropriate public health agency, if outside of Delaware.